



Markets at a Glance:

	17-Jun	% Change		
		1-Day	1-Mth	3-Mths
BSE Sensex	17,617	0.9	4.4	0.6
S&P Nifty	5,275	0.8	4.1	0.6
BSE MidCap	7,011	0.4	0.8	3.7
BSE SmallCap	8,891	0.6	0.9	5.1
BSE Auto	8,186	0.9	6.9	7.8
BSE Bankex	10,924	0.3	1.4	4.9
BSE Cap Gds	14,462	1.8	4.7	3.6
BSE FMCG	3,102	0.2	6.3	10.8
BSE Health	5,600	0.4	3.9	8.3
BSE IT	5,381	0.3	4.3	-2.8
BSE Metals	14,998	0.7	-3.6	-15.9
BSE Oil & Gas	10,408	1.3	6.7	3.1
BSE Power	3,113	0.5	2.8	1.7
BSE PSU	9,220	0.1	3.2	1.4
BSE Realty	3,098	0.6	-4.4	-8.2
World Mkts				
Dow Jones	10,434	0.2	-0.7	-3.2
Nasdaq	2,307	0.1	-0.4	-3.5

Institutional Trends:

INR Cr	Cash			
	Cash	F&O	MTD	FYTD
FII's	858	1,744	4,304	4,330
MFs	n.a	-	740	-550

Currencies/Commodities:

INR	Rate/Unit	Change	
		Abs	%
USD/INR	46.32	0.24	0.5
GBP/INR	68.65	-0.08	-0.1
EURO/INR	57.37	-0.06	-0.1
Brent (\$/Bl)	78.68	0.54	-0.7
Gold .99 (INR/10 Gm)	18,675	-35	-0.2
Silver .99 (INR/1 Kg)	29,250	-55	-0.2

Interest Rates (%):

	Last	1-Mth ago	3-Mth ago
Call	5.10	3.85	3.25
91 Day T-Bills	5.25	3.90	4.20
1 Year G-Sec	5.35	5.07	5.25
9 Year G-Sec	7.61	7.46	7.97

ADR/GDRs:

Company	Price (\$)	% Chg	Prem/Disc
Dr. Rdy's	30.9	0.0	0.6
HDFC Bk	151.3	-0.9	17.0
ICICI Bk	38.0	0.1	-0.5
Infosys	63.2	-0.6	5.7
MTNL	2.8	3.9	0.6
Tata Mot	17.9	-1.2	-48.3
Tata Com.	11.1	0.0	-1.0
Wipro	20.7	4.3	51.2

	Sensex Close			
This Week: 12	▲ 06	▼ 05		
Today: 55	▲ 32	▼ 22		

Strategy for the Day:

- ✓ The stocks are set for another two-way session to end with gains fourth week in a row with too many expectations from a company AGM today.
- ✓ The momentum, however, appears fizzling after seven consecutive days of gains, longest winning streak in many weeks.
- ✓ With each day of advance, Nifty reaches closer to multiple resistance points, the next one placed at 5,311.
- ✓ Global currency and gold markets show yellow metal reaching for a blow off stage and is awaiting catastrophe anytime now to suck new investments into the gold. We, therefore, refrain from enlarging commitments in equities and convert paper profits into cash.
- ✓ Asian markets are lacklustre.

Action Ideas Today:

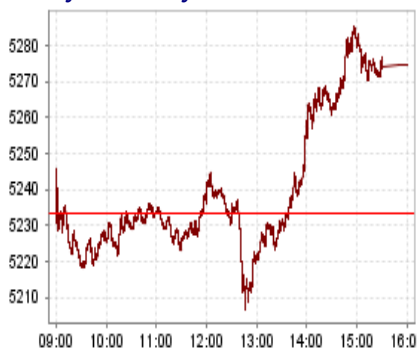
	Bias	Support		Resistance	
		S2	S1	R1	R2
Sensex	Neutral	17,300	17,459	17,711	17,806
Aban Offshore	Positive	697	714	742	754
Tata Motors *	Positive	768	784	810	820
Bank of India	Negative	321	323	331	335
Cairn India	Negative	302	304	310	313

* - Tech Today: Page 2

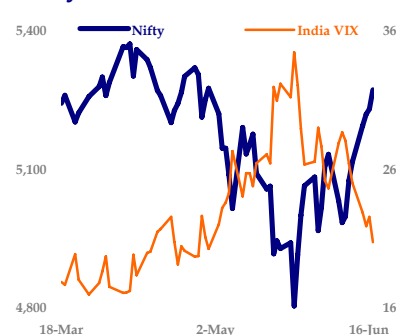
Turnover Data:

INR Cr	% Change			
	Last	1-Day	1-W Avg	1-M Avg
BSE Cash	4,578	-5.1	15.5	19.2
NSE Cash	14,372	-0.2	17.7	11.6
NSE F&O	106,229	14.0	18.4	7.5
Nifty Index Future	17,197	27.9	-0.1	-9.3
Nifty Index Future OI	16,772	-1.4	6.8	15.9
NSE Market Cap	6,118,689	0.5	3.4	4.5

Nifty Intraday:



Nifty, VIX - 3 mths:



For private circulation only. Please read the Important Disclosure at the end of the report.

KSL Intelligent Research Reports can be accessed on: www.bloomberg.net (KHDS<GO>), www.thomsonreuters.com, www.capitaliq.com, www.themarkets.com, www.kslindia.com, www.moneycontrol.com, www.securities.com, www.valuenotes.com

This report is intellectual property of Khandwala Securities Ltd; queries on this report may be directed to Head of Research at research@kslindia.com



Short Term: Upto 1-Week; Medium Term: Upto 1-Month; Long Term: Upto 6-Mths

Tata Motors (CMP: 800)	
Strategy: BUY	ST Trend: UP
Support:	774 ; 750
Resistance:	838 ; 872
52-Week Hi/Lo (INR):	882.20 / 254.30
20 DMA:	744.07
50 DMA:	780.69
200 DMA:	699.07

Tata Motors after spending sixteen days within an ascending triangle pattern finally managed to spurt out breaching 50-day average and 0.5 retracement (882.20 - 670) sited at ~ 776. Key momentum indicators RSI and MACD on daily charts are in bullish mode. Expect price to re-test Rs 838, breach of which could push it to Rs 872. A strong demand zone is located at ~ Rs 774.

NEWS TODAY

ECONOMY

- ✓ The RBI said that **high inflation is a cause of worry** for the Reserve Bank of India and it is willing to take policy actions as per the changing economic environment.
- ✓ **India Inc is ready to invest in Russia's pharmaceutical sector** and the two govts are working on a joint document to this effect, Commerce and Industry Ministry said.
- ✓ RBI said that **policy measures will depend upon the changing economic environment** and the current inflation is still within RBI estimates.
- ✓ An inter-meeting **policy rate hike will depend on volatility** and wholesale price-based inflation is not beyond RBI's estimates, RBI said.
- ✓ India's **inflation rate has reached uncomfortable levels** and some action from the RBI is needed to curb demand-side pressures, PMEAC said.
- ✓ **Food price index** rose 16.12% in the year to June 5, while the fuel price index climbed 13.18%.
- ✓ After two years of economic slowdown, the **Indian economy is on the rebound** with three key sectors, industrial, services and mfg - expected to fare well, leading to an over 9% GDP growth in FY11, CMIE said.
- ✓ Faced with **foodgrain storage problems**, India is exploring the possibility of using Chinese technology to store rice and wheat for longer periods, Food Ministry said.

CORPORATE

- ✓ **Aditya Birla Finance** has entered the microfinance business and has closed a financing deal with a Hyderabad-based MFI.
- ✓ **Bajaj Hindusthan** said its board has approved merger of unit **Bajaj Hindusthan Sugar** with itself.
- ✓ **Bharti Airtel** has partnered **Cisco** and India's **Servion** to launch hosted contact centre services in India.
- ✓ **Cognizant Technology** has acquired Paris-based **Galileo Performance**, for a undisclosed sum.
- ✓ **Duncans Inds** approved inducting **Jaypee Associates** as a strategic partner for its closed fertiliser unit.
- ✓ **Engineers India** has filed a DRHP with SEBI for a public offering of 10% govt stake in the consultancy firm.
- ✓ **M&M** along with its subsidiary **MOICML**, Arabia Holdings and Ras Al-Khaimah Transport Investments LLC have entered into an agreement to form a joint venture (JV) company in the Emirate of Ras Al Khaimah in the UAE for armoring of vehicles.
- ✓ Telecom tower firm **Quippo-WTTIL** has signed a five-year multi-million dollar outsourcing deal with **IBM**.
- ✓ **Reliance Power** announced the commencement of power generation from 300 Mw Unit-II of its Rosa Power Project.
- ✓ **South Indian Bank** has tied up with **Bank of New York Mellon** to facilitate remittances from the US to India.

INTERNATIONAL

- ✓ **Abu Dhabi Commercial Bank** has agreed to buy the **Royal Bank of Scotland's** retail banking business in the UAE, valued at \$100-mn.
- ✓ Paris-based **Capgemini** completed the acquisition of UK-based **Strategic Systems Solutions (SSS)** by acquiring remaining 51% stake.
- ✓ British oil and gas company **Fairfield Energy** said it planned to raise \$450-\$500 mn to build its North Sea business in a July listing on London stock exchange.
- ✓ Arizona's **First Solar** and China's **Suntech Power** are working on plans to enter the market as India commits to an ambitious \$70-bn program to build 20 Gw of solar capacity by 2022, from about 30 Mw now.
- ✓ Japan's **Fujitsu** and **Toshiba Corp** unveiled plans to merge their mobile phone businesses in October.
- ✓ **Japan's government pledged to cut the nation's tax on businesses** and nurture the environment and health care industries as part of a plan to defeat deflation and end two decades of economic stagnation.
- ✓ **Standard Chartered Bank Plc** and soon-to-be-listed **Agricultural Bank of China** have agreed to a strategic partnership.
- ✓ Japan's **Toshiba Corp.**, plans to double overseas nuclear sales by 2015 and invest ¥50-bn (\$550-mn) a year in its power business to tap growing demand.



INDIA

Name	Designation	Sectors	E-mail
EQUITY RESEARCH		TEL. NO. +91 22 4076 7373	
		FAX NO. +91 22 4076 7378	
Ashok Jainani	VP, Head Research	Market Strategy	ashokjainani@kslindia.com
Dipesh Mehta	Sr. Research Analyst	IT, Telecom	dipesh@kslindia.com
Hatim K Broachwala	Research Analyst	BFSI	hatim@kslindia.com
Vinay Nair	Research Analyst	Energy	vinay.nair@kslindia.com
Giriraj Daga	Research Analyst	Metals & Mining, Cement	giriraj@kslindia.com
Kruti Shah	Research Associate	Economics	kruti.shah@kslindia.com
Aditya Shekhawat	Research Associate	Autos	aditya.shekhawat@kslindia.com
Dinesh Bhatia	Research Associate	Technical Analysis	dinesh.bhatia@kslindia.com
Sandeep Bhatkhande	Research Associate	Publishing	sandeep@kslindia.com
Lydia Rodrigues	Research Executive	Data Mining	lydia@kslindia.com
INSTITUTIONAL DEALING		TEL NO. +91 22 4076 7342-47/56	
		FAX NO. +91 22 4076 73 77-78	
Biranchi Sahu	Head	Institutional Equity	bsahu@kslindia.com
Gopi Doshi	Senior Dealer	Institutional Equity	gopi.doshi@kslindia.com
Mayank Patwardhan	Dealer	Institutional Equity	mayank.patwardhan@kslindia.com
Bhadresh Shah	Dealer	Institutional Equity	bhadresh.shah@kslindia.com
PRIVATE CLIENT GROUP		TEL NO. +91 22 4200 7300	
		FAX NO. +91 22 4200 7399	
Subroto Duttaroy	General Manager	Equity & Portfolio Mgmt. Service	subroto@kslindia.com
BRANCH OFFICE (PUNE)		TEL NO. +91 20 2567 1404/06	
		FAX NO. +91 20 2567 1405	
Ajay G Laddha	Vice President		ajay@kslindia.com

Head Office

Khandwala Securities Limited
Vikas Building, Ground Floor,
Green Street, Fort,
MUMBAI 400 023.
Tel. No. (91) (22) 4076 7373
Fax No. (91) (22) 4076 7377/78
E-mail: research@kslindia.com

www.kslindia.com

Corporate Office

TruMonee Financial Limited
1st Floor, White House Annexe,
White House, 91, Walkeshwar Road,
Walkeshwar, MUMBAI - 400 006
Tel No.: +91 22 4200 7300
Fax No.: +91 22 4200 7399
Email: advice@trumonee.com

www.trumonee.com

Branch Office

Khandwala Securities Limited
C8/9, Dr. Herekar Park,
Off. Bhandarkar Road,
PUNE 411 004
Tel. No. (91) (20) 2567 1404/06
Fax. No. (91) (20) 2567 1405
Email: pune@kslindia.com

Short-term trading based on technical indicators is a risky and skill oriented practice, which may result into huge losses or profits. It is not advisable to trade a stock if it reaches the target price first and then comes within recommended range. Target prices are just indicative based on the various technical parameters. Actual stock prices may come nearer or breach those levels. Always follow stop losses to avoid larger losses.

Important Disclosure: The Research team of Khandwala Securities Limited (KSL) on behalf of itself has prepared the information given and opinions expressed in this report. The information contained has been obtained from sources believed to be reliable and in good faith, but which may not be verified independently. While utmost care has been taken in preparing the above report, KSL or its group companies make no guarantee, representation or warranty, whether express or implied and accepts no responsibility or liability as to its accuracy or completeness of the data being provided. All investment information and opinion are subject to change without notice. Also, not all customers may receive the material at the same time.

This document is for private circulation and information purposes only. It does not and should not be construed as an offer to buy or sell securities mentioned herein. KSL shall not be liable for any direct or indirect losses arising from the use thereof and the investors are expected to use the information contained herein at their own risk. KSL and its affiliates and / or their officers, directors and employees may own or have positions in any investment mentioned herein or any investment related thereto and from time to time add to or dispose of any such investment. KSL and its affiliates may act as market maker or have assumed an underwriting position in the securities of companies discussed herein (or investments related thereto) and may sell them to or buy them from customers on a principal basis and may also perform or seek to perform investment banking or underwriting services for or relating to those companies.

The investments discussed or recommended in this report may not be suitable for all investors. Investors must make their own investment decisions based on their specific investment objectives and financial position and using such independent advisors, as they believe necessary. Income from investments may fluctuate. The price or value of the investments, to which this report relates, either directly or indirectly, may fall or rise against the interest of investors. The value of or income from any investment may be adversely affected by changes in the rates of currency exchange.

This document is strictly meant for use by the recipient only. None of the material in this report shall be reproduced, resold or re-distributed in any manner whatsoever without the prior explicit written permission from KSL.